

**GEFEG.FX**  
eBusiness Interface Design

**GEFEG.FX Software für eBusiness Planer und eCommunities**

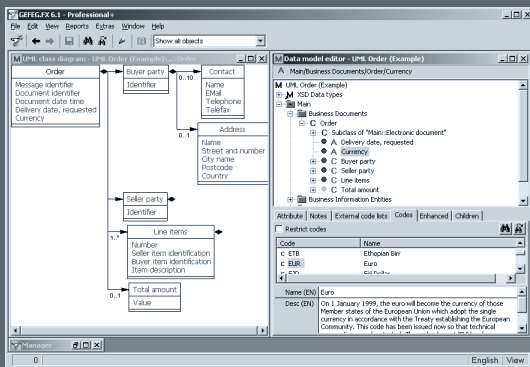
GEFEG.FX standardizes and simplifies all regular working routines necessary for the development, maintenance, and customization of business data standards. Major objectives of using GEFEG.FX are to assure and maintain high quality of business documents electronically exchanged between trading partners, ensure the consistency of business data and to accelerate the implementation in the business process chain.

With its functional range which includes data modeling, XML schema development, classic EDI guidelining techniques as well as advanced testing and validation functions, GEFEG.FX offers unique capabilities for harmonizing and managing all kinds of business data interfaces.

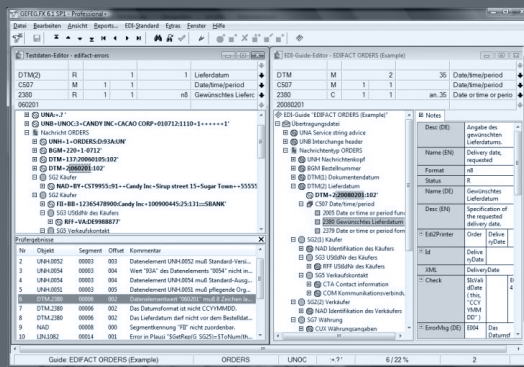
**Benefits**

- Improved interoperability
- Increased reusability
- Clear unambiguous semantic description of content and structures of electronic messages
- Business focused eStandards
- Consistent documentation across all business messages

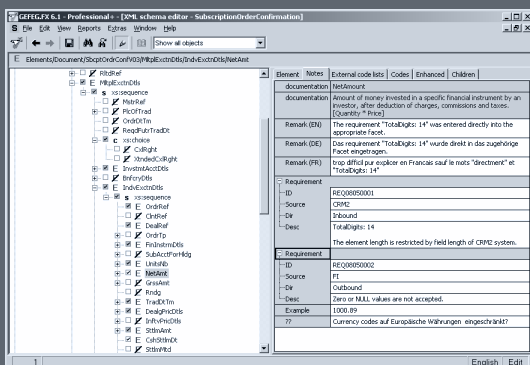
**Example screens**



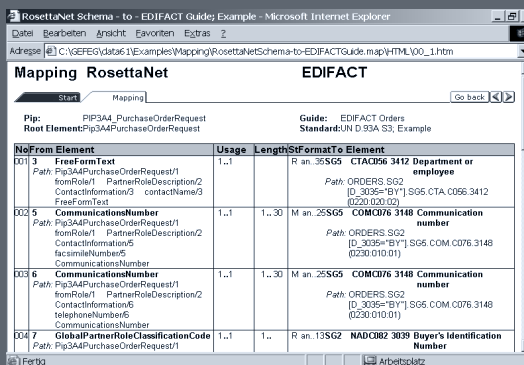
UML Class Diagram



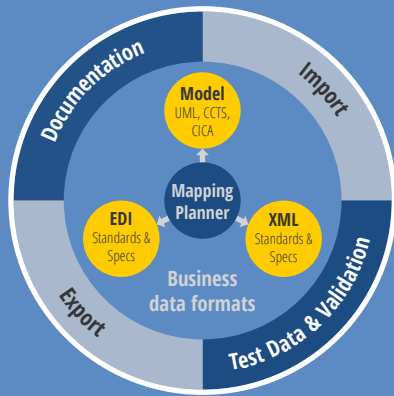
EDI Message Test



XML Schema Editor



Mapping RosettaNet-zu-EDIFACT



### GEFEG.FX has been designed for ...

- Companies that wish to establish know-how on B2B standards, or want to keep it up-to-date.
- Companies that already exchange business data electronically, and wish to apply the data modeling approach, or XML schema technology.
- B2B business analysts, organisational planners, developers of standards and data exchange formats, and B2B consultants will also profit from the professional functions of GEFEG.FX.

### Future-Proof Data Interchange through Harmonisation, Integration, and Consistence

- GEFEG.FX manages all of your company's data formats and their descriptions in one and the same software. Thanks to the single-source principle human readable documentation, machine-readable files for automatic processing and transaction files are consistent.
- As basis for your work GEFEG.FX contains an up-to-date comprehensive repository for classical EDI standards as well as for XML based standards.
- An integrated data modeling tool (UML Class) allows the development of an electronic business document independently from the to-be implemented eStandard.
- Sophisticated XMLschema development and specification features as well as EDI guideline functions allow customizing the eStandards to your needs.
- A mapping planner helps to plan and document the relation between data formats.
- XML and EDI format specifications and logical mappings, which document the relation between the data formats, can be handed over seamlessly to a range of translator tools, mapping workbenches, etc.
- Test data generation and compliance checking of classical EDI and XML messages at an early stage of the project prevent costly error detection.
- With GEFEG.FX you can create and output documentation at the push of a button, create interfaces, messages and test data in human readable form. Ready-to-use standard reports can be used immediately or adapted to individual requirements.

GEFEG mbH  
Storkower Straße 207  
10369 Berlin  
Germany

tel. +49 30 97 99 14 - 0  
info@gefeg.com  
www.gefeg.com

GEFEG.FX Version Management with Subversion® (SVN) in the local network or on the internet:

Controlled collaboration of work groups and project teams