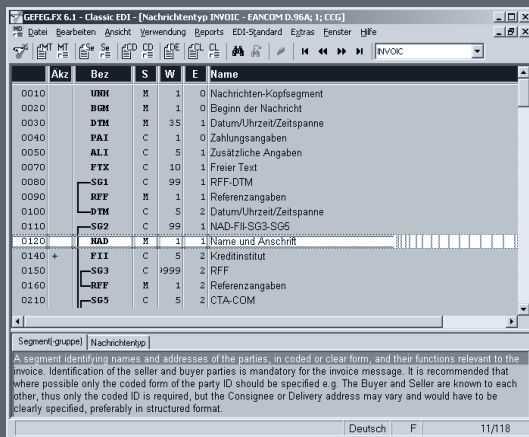


GEFEG.FX
eBusiness Interface Design

The software GEFEG.FX Classic EDI supports users in the development, specification and maintenance of custom guidelines. Comprehensive functions for the validation and testing of EDI messages take care of the data quality. A unique documentation feature provides for the documentation of EDI guidelines at the push of a button.



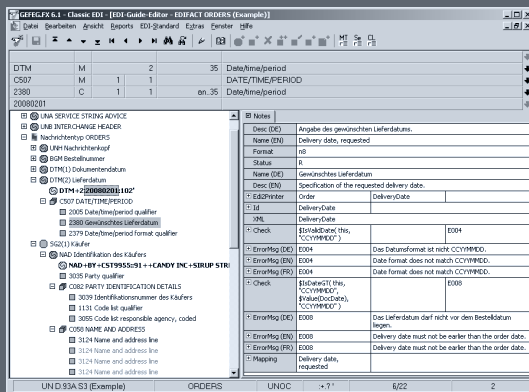
eStandards like ASC X12, EDIFICE, GS1 EANCOM®, UN/EDIFACT, and others are available for GEFEG.FX. The information contained in the eStandard table is displayed in a comfortable table view.

Benefits

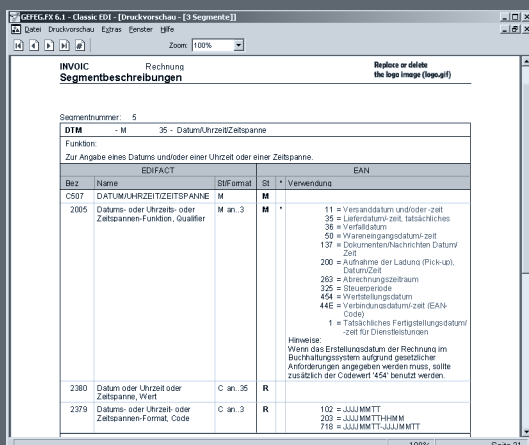
- High data quality and integrity
- Improved interoperability
- Improved understanding of business
- Increase in productivity
- Reduced implementation costs
- Improved overview and monitoring of the meta data in EDI projects
- Consistent documentation across all business messages

GEFEG.FX Users (Extract)

- Adolf Würth
- August Storck
- Beiersdorf
- Carrefour
- COOP
- GS1 Germany
- Harry-Brot
- Hilcona
- Hugo Boss
- Kaiser's Tengelmann



The use of the eStandard in your company, based on EDIFACT, GS1 EANCOM®, X12, etc., is described in guidelines which are derived from the eStandard. The guideline is at the same time the most important information source for all details of the implemented message.



The guideline is the base for tests, documentation and the transfer to the EDI translator – the single source principle safeguards data consistency and saves the time you will spend for design and maintenance.

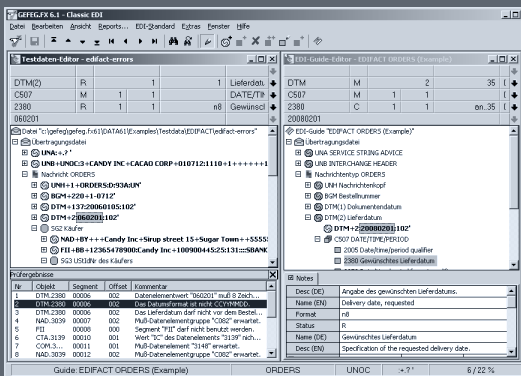
GEFEG.FX has been designed for...

- Companies that wish to establish know-how on B2B standards, or want to keep it up-to-date.
- Companies that already exchange business data electronically, and wish to apply the data modeling approach, or XML schema technology.
- Companies that wish a professional software for specifying classical EDI and XML based standards in guidelines.
- B2B business analysts, organizational planners, developers of standards and data exchange formats, and B2B consultants will also profit from the professional functions of GEFEG.FX.

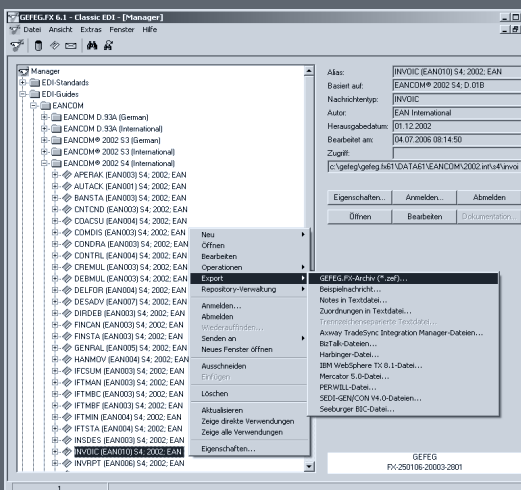
GEFEG.FX
eBusiness Interface Design

Future-proof Data Interchange Through Harmonization, Integration and Consistence

- A comprehensive repository for classical EDI standards is available for GEFEG.FX as working base.
- EDI guideline functions allow for the development of custom standards.
- EDI Guidelines may be handed over to various converters, mapping benches, etc.
- The single source principle secures the consistency among specification, documentation and transaction.
- The documentation allows for an improved understanding of all the members of the project team.
- Avoid a costly search for errors at a later stage and save time and money by test data generation and compliance check right at the beginning of the project.



Comprehensive functions for validation and testing support the data quality of your message - before using it in a real live production environment.



The final guidelines (based on ASC X12, EDIFICE, GS1 EANCOM®, UN/ EDIFACT, and so on) may be exported directly from GEFEG.FX to various EAI / EDI systems, like translators, mapping workbenches, etc. The risk of errors is reduced by the seamless data flow while saving time by this process at the same time.